

WATER DISPENSERS



droople



SMART WATER MONITORING SOLUTIONS

BRING VALUABLE INSIGHTS TO A FORESEEABLE FUTURE

Droople's Water Intelligence Platform taps into hidden data with AI-enabled edge and cloud data processing by measuring water consumption and quality parameters at any point-of-use. The Internet of Water bridges precise monitoring capabilities, predictive maintenance, and end-to-end behavior insights.

At Droople we offer our customers full transparency on water consumption, and convert actionable insights into a new business intelligence.



DEMONSTRATE
SUSTAINABLE IMPACT



AUTOMATE PROCUREMENT



SHIFT FROM REACTIVE
TO PREDICTIVE MANAGEMENT



WATER DISPENSERS

OVER THE COUNTER

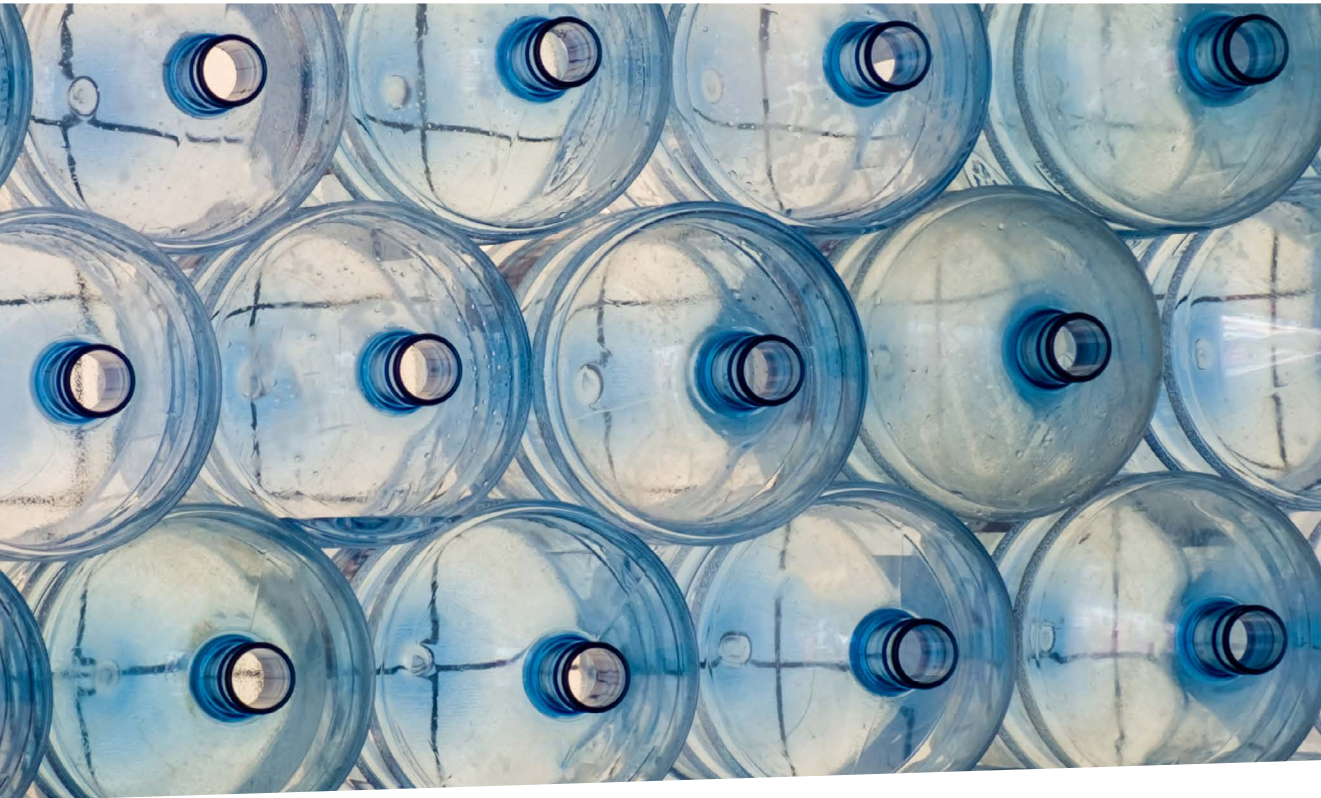


STANDALONE



UNDER THE SINK





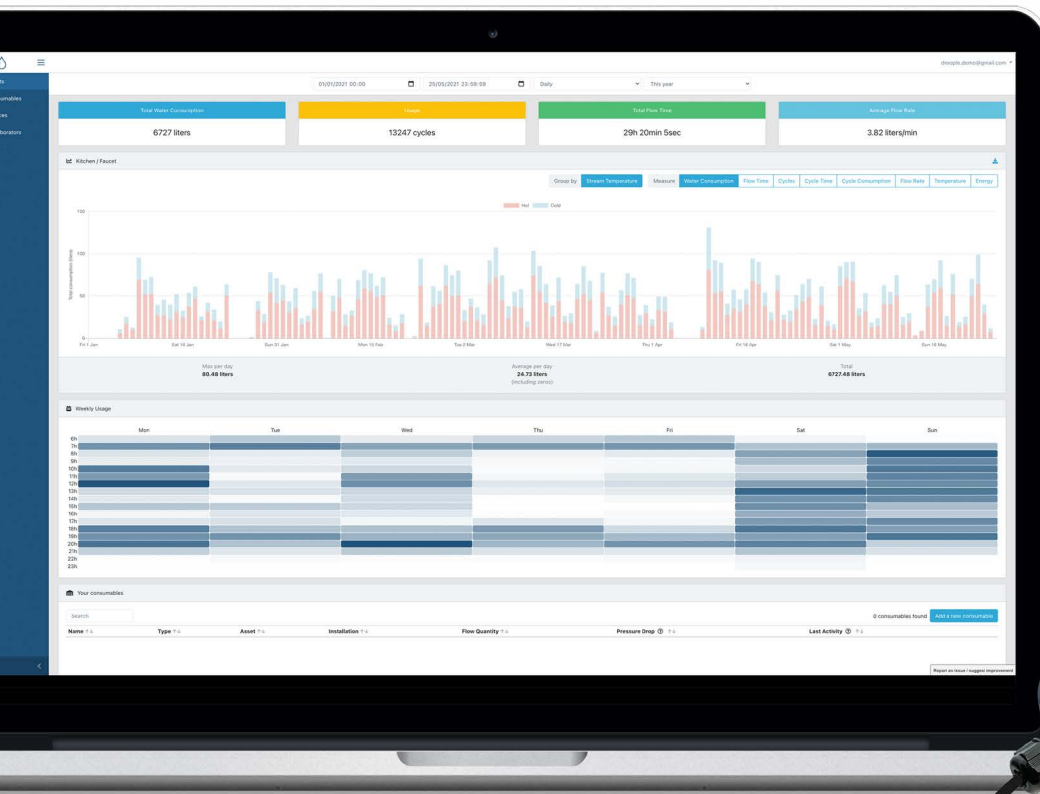
WATER QUALITY & SUSTAINABILITY

The landscape for drinking water becomes more challenging with strict requirements to guarantee purity, taste and control of hardness. This also feeds the understanding of overall sustainable impact in reducing plastic bottles worldwide.

Water dispenser fleets are complex with ranges of sizes and types (**over the counter, standalone, under the sink**) and consumables alongside their various **filter cartridges, CO₂ canisters, and UV lamps**.

HOW TO IMPROVE YOUR TOMORROW

- ◇ Enable lean logistics with sufficient inventory of fleet and consumable type by suggesting better fit, unmet demands and supplies
- ◇ Rid of displeased clients from reactive maintenance
- ◇ Showcase sustainability usage and dispenser KPIs



EASY RETROFIT SOLUTION

Droople provides you the only fully retrofit solution on the market packaged with actionable insights. Easily adaptable to indoor & outdoor water dispensing systems.

PLUG & PLAY

Connect smart sensors directly to your inline plumbing and ensure your water filling station provides the same water quality, still or carbonated.

YOUR CONTROL TOWER

Obtain data on water consumption and consumable health status. Behavioral patterns of your water dispenser at your disposal.

- ◊ 24/7, Remote, Real-time
- ◊ Track flow rate, pressure, affluence & queue statistics
- ◊ Geolocation of your fleet, filter cartridges, CO₂ canisters and UV lamps
- ◊ Set alarms for leaks, asset inactivity or define your own notifications



Predictive Maintenance

- ◇ Ensure uptime of 99.9%
- ◇ Eliminate unplanned interventions



Lean Logistics

- ◇ Avoid inventory shortage and reduce overstock
- ◇ Forecast replacements with notifications 24/7
- ◇ Match size of consumable with active needs



Sustainability KPIs

- ◇ Show water quantity & usage
- ◇ Proven savings for single-use plastic bottles and CO₂ emissions
- ◇ Showcase monetary impact and donations



Customer Retention

- ◇ Gain customer loyalty by providing best-in-class service and transparency
- ◇ Protect your asset's lifespan and avoid leak damages
- ◇ Overcome initial upfront adoption with pay-per-use business modeling

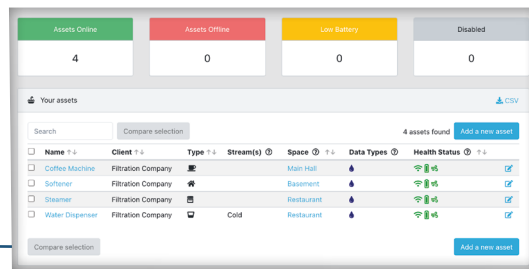


SMART MONITORING SOLUTIONS

YOUR INTELLIGENCE PLATFORM

Droople's full-stack cloud solution delivers real-time monitoring and tailored benchmarks for your organization according to your operations.

Click me

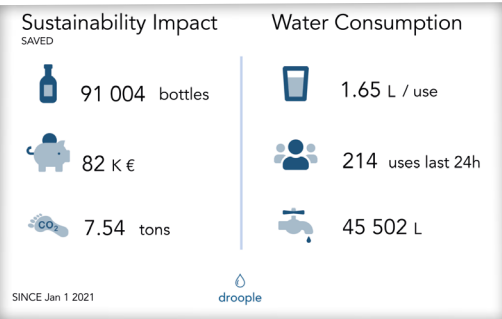
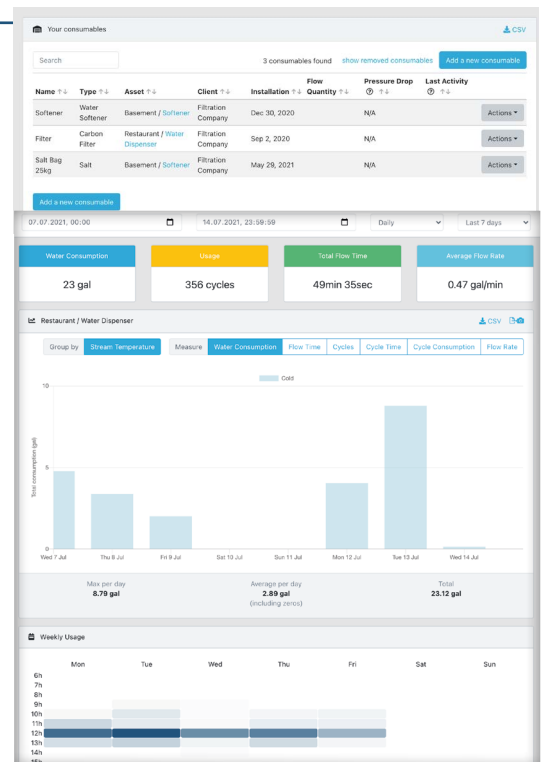


ASSET OVERVIEW

Geolocalise, benchmark and check your assets' health status

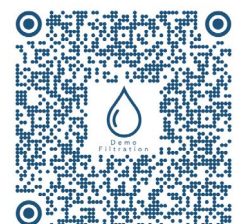
CONSUMABLE MANAGEMENT

Track, predict and suggest the best-fit for filter cartridges, CO₂ canisters and UV lamps



PERFORMANCE KPI'S

Showcase sustainability metrics and offer a pay-per-use business model.





YOUR DROOPLE PACKAGE

Sensors



Flow rate & temperature



Pressure

Communication module



iLink®

Internet Access Gateway



Mini Hub®
4G





As easy as 10 minutes to install and register:

CONNECT

Sensors retrofit to inline pipes measuring flow and temperature of the water dispenser, and pressure of the CO₂ canister.

UNDERSTAND

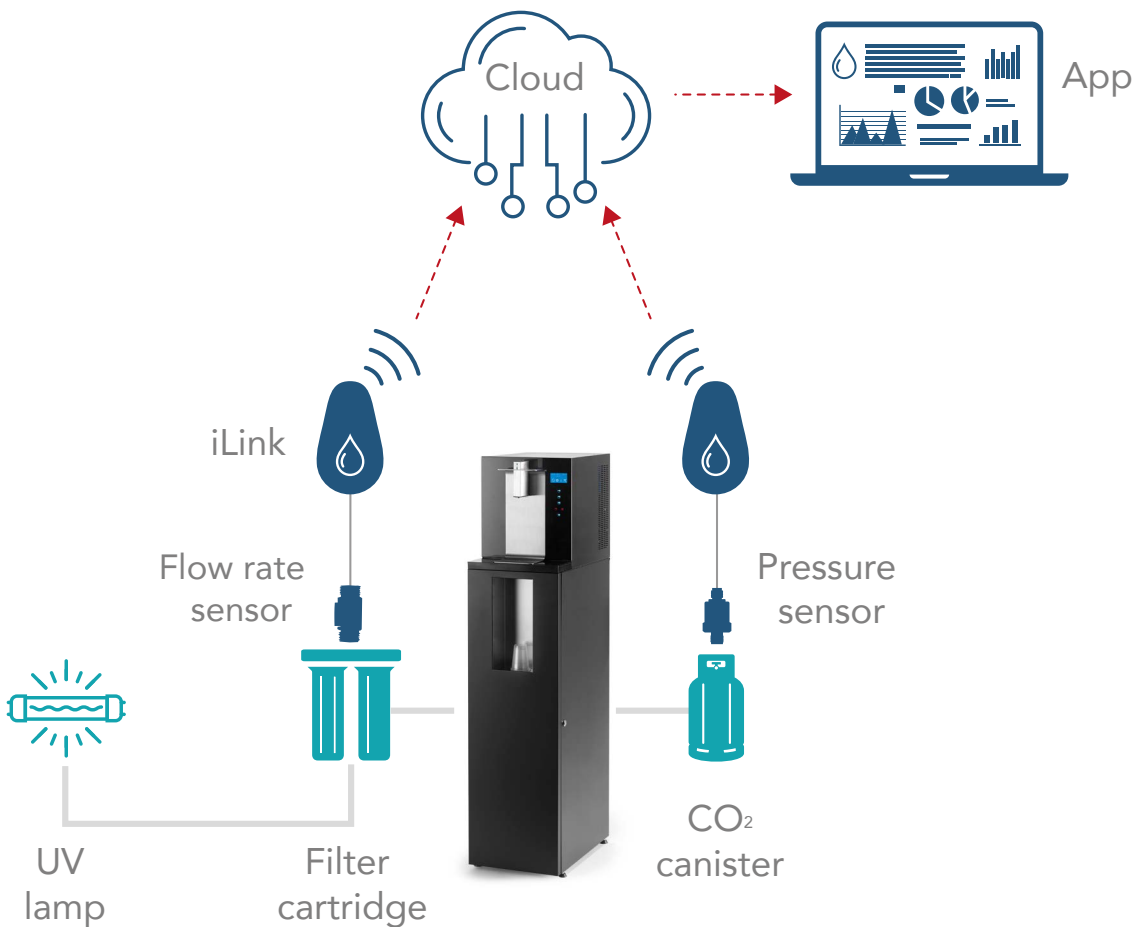
The iLink harvests your data and securely sends to the cloud.

VALUE

The cloud platform stores the historical data and process insights useful to your business.

MANAGE

Your dashboard app provides remote, real-time monitoring and alarm notifications. Gain insights to consumption, behavioral patterns and the health status of your water dispensers and consumables.



Sensor

Flow & temperature sensor



Flow rate	1/2": 0.5 – 20 l/min 3/4": 2 – 30 l/min 1": 3 – 45 l/min
Working temperature	4 – 65°C
Pipe connection	Male - Male NPT or BSP

CO₂ Pressure sensor



Pressure range	1/4": 0 - 100 bar
Working temperature	-45 to 85°C

iLink

Communication Module



Radio Protocol	LoRaWAN (EU868 MHz, US933MHz)
Data frequency	5 min
Battery	Lithium 2600mAh
Lifetime	Up to 10 years
Size	85mm x 55mm x 30mm
Water resistance	IP67
Certificates	EU/FCC/IC/TELEC

Mini Hub | 4G Gateway

Communication Module



LoRaWAN Frequency Band	EU 862-870 MHz / US 915 MHz / AS 923 MHz
WiFi	802.11 b/g/n
Antenna type	Built-in LoRa and WiFi antenna
Power Supply	Wall plug type / USB-C port
Size	80mm x 80mm x40mm
Certificates	EU/FCC/IC/RCM/WPC



droople

ABOUT US

Droople develops innovative IoT solutions for intelligent water asset management to deliver real-time insights at any point of use. Connect sanitary ware, water treatment systems, and other appliances. Our AI-enabled tools empower customers worldwide to accurately measure, monitor, and analyze their water processes for predictive and proactive maintenance. Untap potential water and energy savings.



JOIN US TO PRESERVE WATER – OUR SHARED SOURCE OF LIFE!



droople

ROUTE DU VERNEY 18, 1070 PUIDOUX, SWITZERLAND
+41 22 534 99 48 | contact@droople.com | www.droople.com