



FOR HOME

[www.onawater.ie](http://www.onawater.ie)



## Enjoy Stylish and Affordable Luxury with our ONA Boiler Tap System.

Introducing the ONA Water Boiler Tap System, designed to enhance your kitchen experience with sustainability in mind. Our range of ONA tap systems are crafted with efficiency, safety, and convenience, ensuring you save time, energy, and space while enjoying instant access to 98°C water at your fingertips.

We offer a range of innovative solutions that transform tap water into a source of filtered refreshment. Inspired by the desire for convenience, sustainability and style, our taps are designed to elevate your drinking water experience at home.





---

## ONA TANK FEATURES

---

### The detail

---

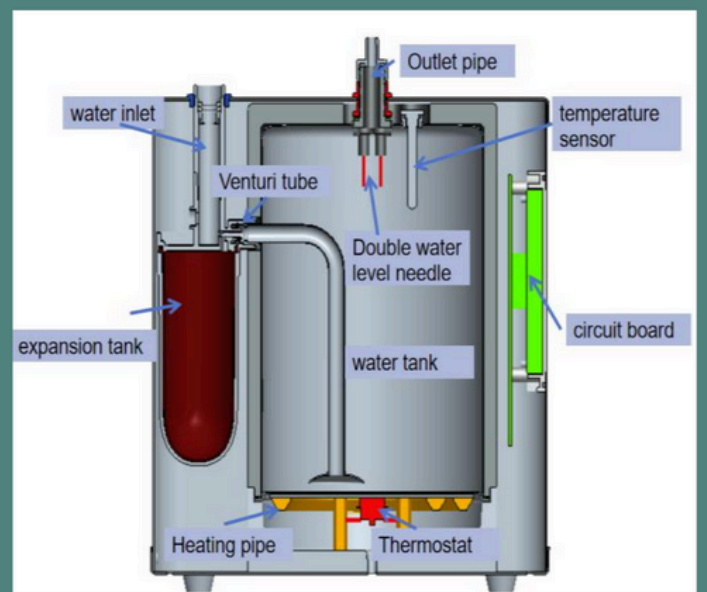
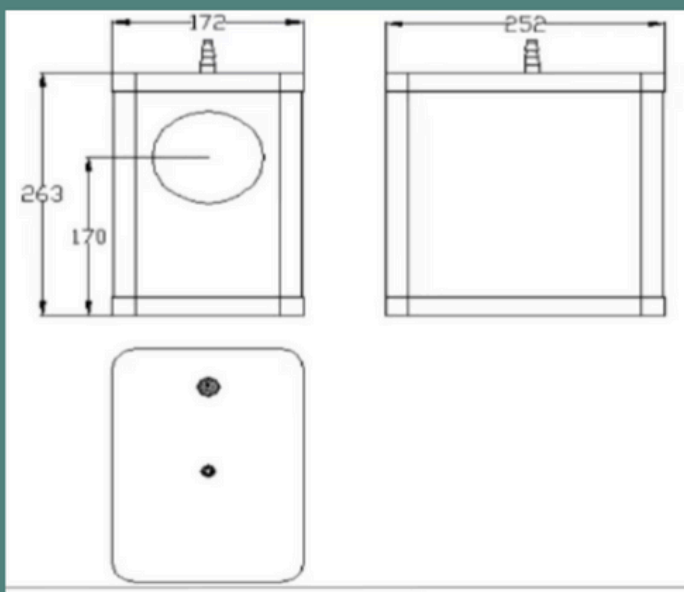
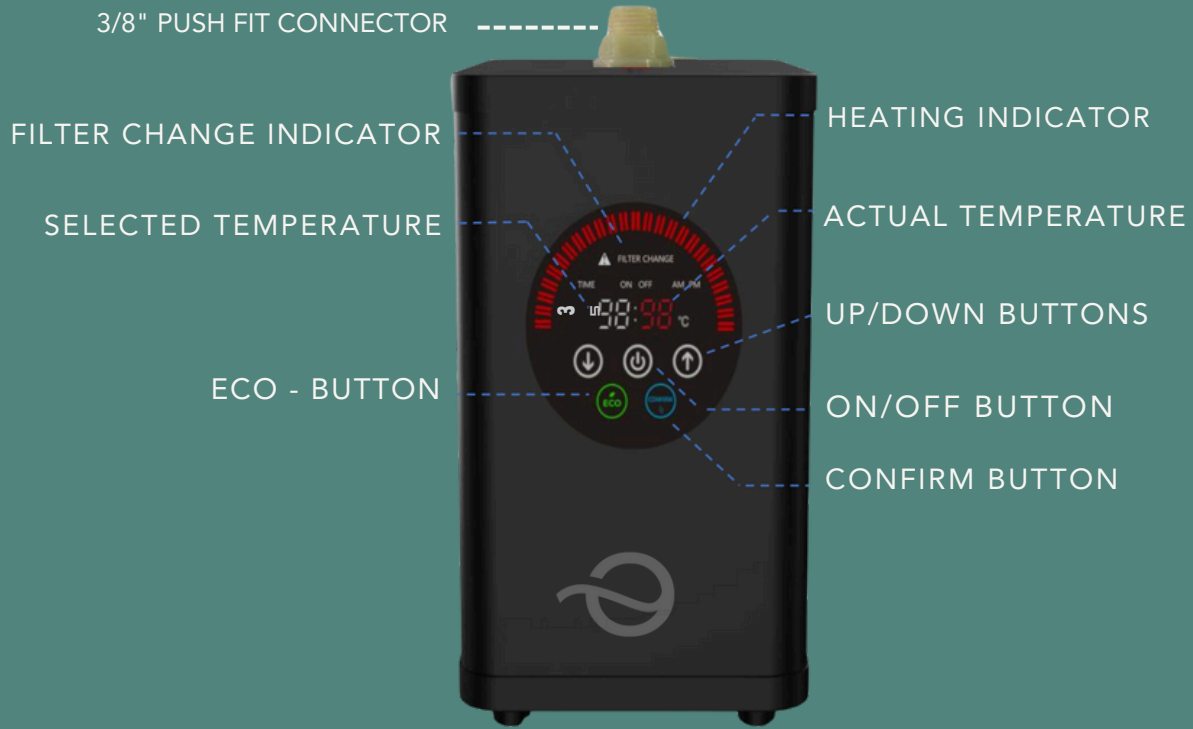
- Filtered \*Hot Water
- Filtered Ambient Water
- Child safety lock on boiling water for peace of mind
- Easy to install & maintain
- ECO-MODE for energy and cost savings
- Pre-filter fitted to combat taste/odour issues
- 3-in-1 tap range available in various finishes
- Descaling kit included for maximum efficiency and longevity

### TECHNICAL SPEC:

- Hot - up to 98°C
- Boiler - 3L Capacity
- Under-counter Unit Dimensions 285W x 300D x 400H
- Power – 230V / 1700W
- Single hole installation – 32mm
- Safety lock on Hot supply



# ONA TANK





Indulge with confidence at the touch of a tap, with our premium filtered Drinking Water that nourishes your body and invigorates your senses.

With our innovative ECO-MODE, designed to seamlessly integrate with your lifestyle while prioritising efficiency and convenience. With the ability to schedule two Eco-mode times, this feature effortlessly transitions the tank into standby during periods of minimal usage, conserving energy and reducing costs. Enjoy peace of mind at the touch of a tap, as our premium filtered Drinking Water nourishes your body and invigorates your senses.

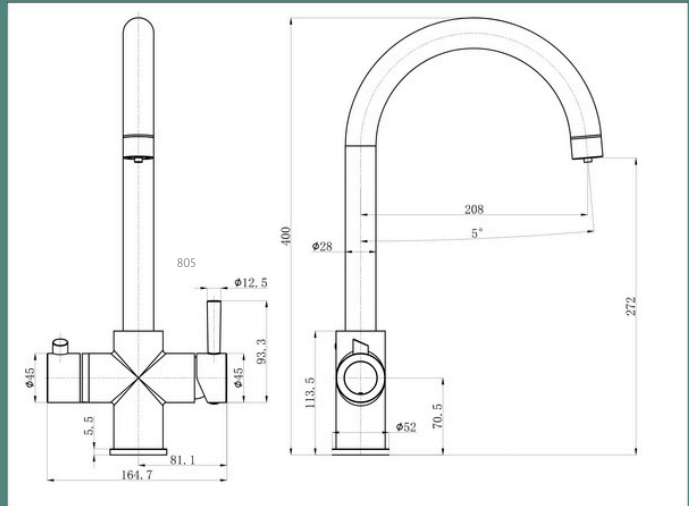
Experience significant cost savings by eliminating the need for bottled water and reducing energy consumption with ONA Water systems, a sustainable solution for your home. Our easy-to-use tap systems offer simplicity and variety, ensuring you find the perfect fit for your needs. Join us in embracing sustainability and convenience with ECO-MODE from ONA Water.



## 3 in 1 Tap Range C-SPOUT & D-SPOUT



The 3in1 is available in C-Spout, D- Spout and Traditional in a variety of finishes. Includes tank, filter and descale kit.



Filtered Hot Water

Pulling lever towards you dispenses filtered hot water



Mains Cold Water

Pull out to the side and back for mains cold water



Mains Hot Water

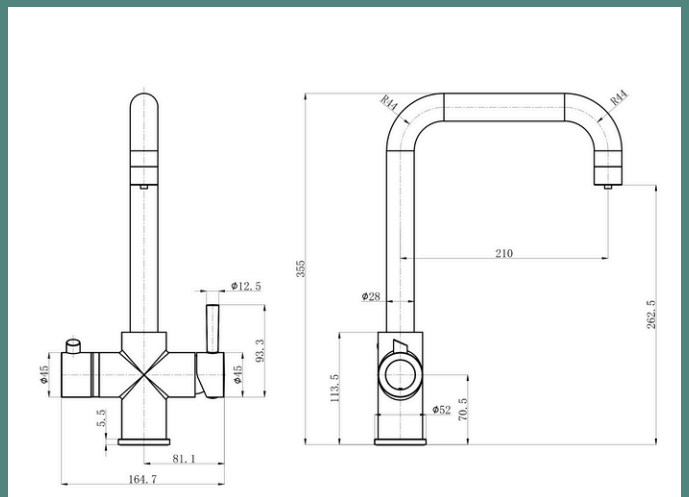
Pull out to side and forward for mains hot water



The tap will fit into a standard sink hole / 35mm and is suitable for thickness up to 2".

On top there are 4 pipes. Red to connect the 1/2" flexi tail to the mains hot water; Blue 1/2" flexi tail to connect to the mains cold water; The last flexi tail to go into the filter inlet; The silicon pipe is connected to the red outlet on the tank outlet.

There is one last pipe to connect the filter out to the tank in. The tank connects to a standard 13amp socket.





---

## 4 in 1 Tap Range

---



### FILTERED HOT

- Child safety feature with a 3-second delay activated by the control button touch
- Red light indicator signals when the tap is about to dispense 98°C hot water
- Continuous touch on the control button is required for dispensing hot water
- Water flow stops automatically when touch is removed for safety



### REGULAR HOT

- Regular hot mains water supplied unfiltered
- Ceramic mixing valve enables smooth temperature adjustment
- Durable, long-life performance assured





## 4 in 1 Tap Range



### FILTERED AMBIENT

- Superior filter system, WRAS and NSF approved
- Provides best tasting, safe water
- Blue LED illuminates with a touch, dispensing filtered water



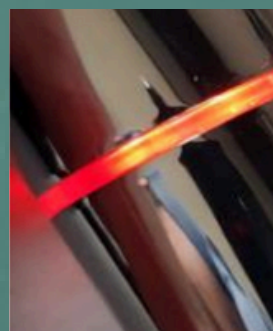
### REGULAR COLD

- Regular cold mains water supplied unfiltered
- Ceramic mixing valve enables smooth temperature adjustment
- Durable, long-life performance assured



**01**  
sec

Touch Button  
for 1 sec for  
Blue LED &  
Filtered Water.



**03**  
sec

Keep Touching  
Button for 3  
Secs for Red  
LED & 98°C  
water dispense



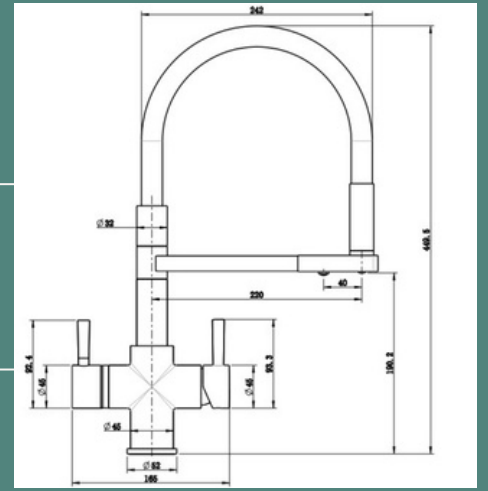


---

## 4 IN 1 TAP RANGE SEMI -PRO

---

ONA 4-in-1 Boiler Tap System, crafted to elevate your kitchen experience with its superior performance and elegant design. This versatile 4-way tap supplies Domestic Cold & Domestic Hot on the right lever and Filtered Drinking & Filtered Boiler supply on the left lever. (cold, warm, filtered cold, and filtered hot water, making it an essential tool for the modern home chef).



---

### The detail

---

- Ultimate Performance: 360° rotation and flexible pull-out magnetic docking arm.
- Durable: Built for longevity with premium materials.
- Stylish: Available in Chrome, Brushed Nickel, and Matt Black
- Complements all kitchen styles and serves as a beautiful focal point.



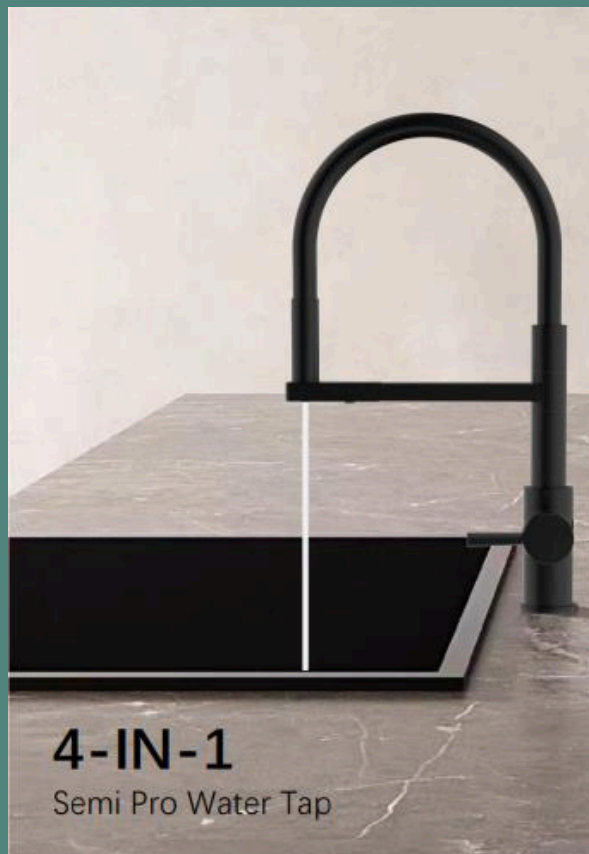


---

## 4 IN 1 TAP RANGE SEMI -PRO

---

**4-IN-1**  
Semi Pro Water Tap



**4-IN-1**  
Semi Pro Water Tap



## Our Filters

### POST CARBON BLOCK FILTER WITH POLPHOS

- Removes sediment particles, chlorine, bad taste & odour
- Available capacity: 3600L
- Service life (10L/day): 6months



Filter has  
3/8"  
INLET &  
OUTLET  
push fit  
connections  
(SUPPLIED)

Feature	MODULE			Housing	
	<ul style="list-style-type: none"><li>Material: Powdered Activated Carbon + Polyethylene</li><li>Type: Block Carbon</li><li>Principal: Adsorption</li></ul>				<ul style="list-style-type: none"><li>Material: Polypropylene</li></ul>
Size(mm)	Inner Diameter	Out Diameter	Length	Diameter	Length
12"	21±0.5	41.5±0.5	222.3±1	64	304

\*[Maximum condition] Pressure: 4.0kgf/cm<sup>2</sup>, Flow: 3.8l/min, Temp: 45°C(113°F)





---

## DESCALE KITS

---

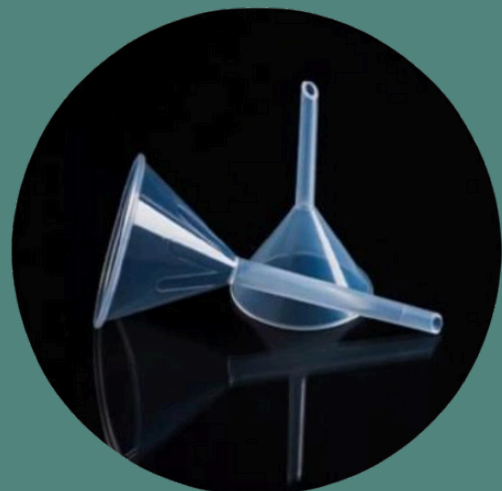
At ONA Water, we prioritise the longevity and efficiency of your hot water system. Introducing our comprehensive descale kit, a vital component to complement our advanced filtration systems. Designed for hassle-free maintenance, our descale kit ensures your system operates at peak performance, providing you with peace of mind and consistent reliability.

---

### The detail

---

- Filter system prevents scaling, improves water taste
- Reduces but does not eliminate need for descaling
- Includes descaling kit for regular maintenance
- Promotes efficiency and product lifespan
- Saves money by reducing power consumption
- Comprehensive, user-friendly maintenance instructions included
- Dedicated customer service team for assistance





The ONA T2 delivers premium water with digital precision, matching sustainable design with complete convenience. With options for sparkling, chilled and ambient water, the T2 can dispense up to 50 L/h, delivering refreshing great-tasting water with ultimate convenience.

---

## ONA T2 TAP SYSTEM

---

### The detail

---

- Premium aesthetic
  - Powerful energy-efficiency
  - Deep sparkle technology
  - Dry chill system
  - Hygiene assurance in every pour
  - Bluetooth® touchless water dispensing option
- 

Capacity	Chilled	Sparkling
	50 L/h	50 L/h
Temperature	Chilled	Sparkling
	2°C	2°C
Dispense height	310mm	
Power	140-200V / 180-250W	
Dimensions	Integrated Tap W322xD540xH400mm	Undercounter ProCore Unit W320xD471xH400mm

---





---

With ONA Water, you can enjoy cost savings by eliminating the need to purchase bottled water and reducing energy consumption for the preparation of hot beverages, cooking, etc. Our systems are a smart investment for your home and a sustainable choice for the environment.

Contact us today for a free consultation and experience the convenience of an ONA Water Tap System in your home.

Contact:

Mariena Cantwell  
Business Development Manager  
+353 858 59 8580  
Mariena.Cantwell@onawater.ie

ONA Water Ireland  
Unit 4 - Lisboney Industrial Estate  
Dublin Road - Nenagh Co Tipperary - E45 KD92  
+353 61 210 095  
sales@onawater.ie